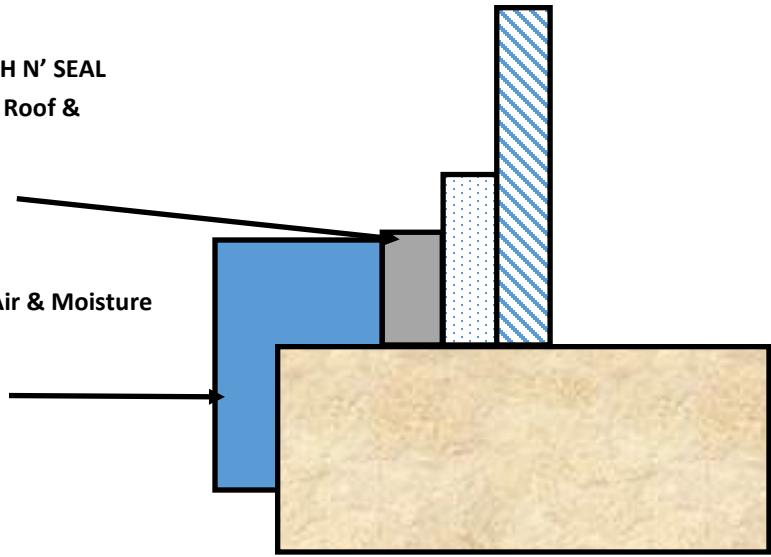


**APOC AP-264 FLASH N' SEAL**  
**White Elastomeric Roof &**  
**Flashing Sealant**

**APOC AP-650 VP Air & Moisture**  
**Barrier**



Notes:

- 1) Detail shows **APOC AP-650 VP Air & Moisture Barrier**. Substrate shown is for reference only. Acceptable substrates include Plywood, OSB, Concrete, CMU, Metal, and Exterior Grade Sheathing.
- 2) Flashing Material; **APOC AP-264 White Elastomeric Roof & Flashing Sealant**.
- 3) Install **APOC AP-650 VP Air & Moisture Barrier** to achieve a water-resistive barrier (WRB). Insulation and cladding not shown. Refer to local code ordinances for insulation and vapor barrier requirements.
- 4) Refer to product specific data sheets (TDS) and **APOC AP-650 VP Weather-Armor Air & Moisture Barrier** guide specification for installation procedures.



4701 E. 7th Ave. Tampa, FL 33065  
 (813) 367-4444 www.icpgroup.com

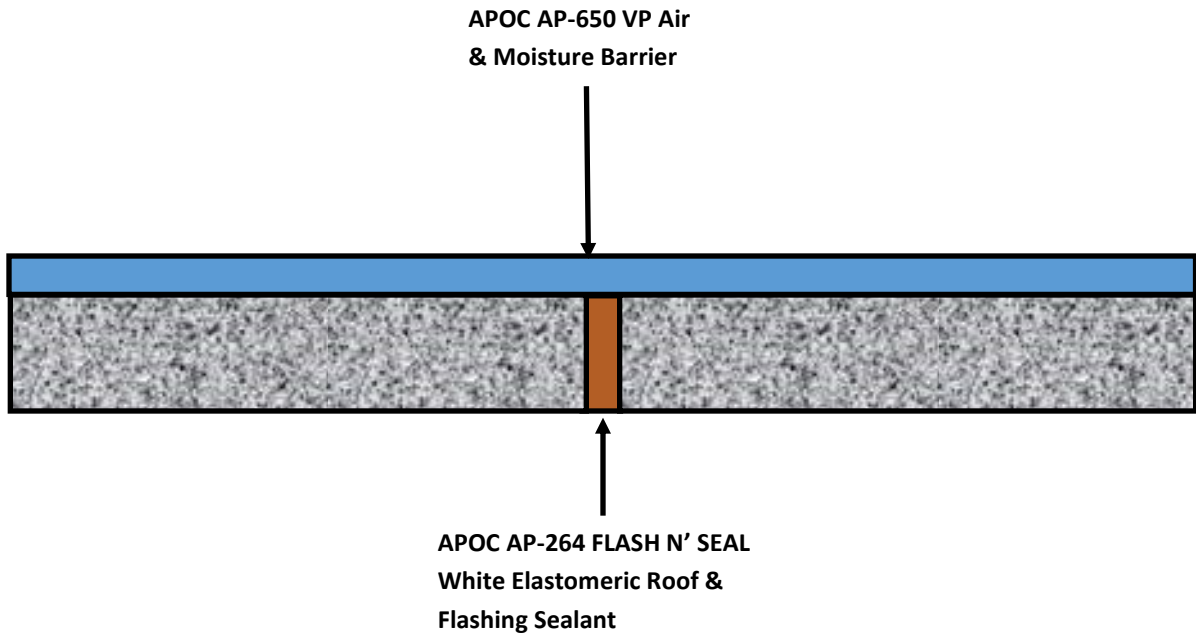
Manufacturer guide details are for reference purposes only. ICP does not assume responsibility for errors or deviations in design or engineering. Project specific verifications are recommended prior to installation.

**APOC AP-650 VP Air and Moisture Barrier**

**Wall / Window**  
**Exterior Wall and Window Transition**

Scale: N.T.S. 04/17/2023

**AP650VP-01**



Notes:

- 1) Detail shows **APOC AP-650 VP Air & Moisture Barrier**. Substrate shown is for reference only. Acceptable substrates include Plywood, OSB, Concrete, CMU, Metal, and Exterior Grade Sheathing.
- 2) Fill grout and strike CMU joints full and flush to create a continuous substrate. Refer to product specific technical data sheet for cure time prior to air barrier installation.
- 3) Install **APOC AP-650 VP Air & Moisture Barrier** to achieve a water-resistive barrier (WRB). Insulation and cladding not shown. Refer to local code ordinances for insulation and vapor barrier requirements.
- 4) Refer to product specific data sheets (TDS) and **APOC AP-650 VP Air & Moisture Barrier** guide specification for installation procedures.



4701 E. 7th Ave. Tampa, FL 33065  
(813) 367-4444 www.icpgroup.com

Manufacturer guide details are for reference purposes only. ICP does not assume responsibility for errors or deviations in design or engineering. Project specific verifications are recommended prior to installation.

## APOC AP-650 VP Air and Moisture Barrier

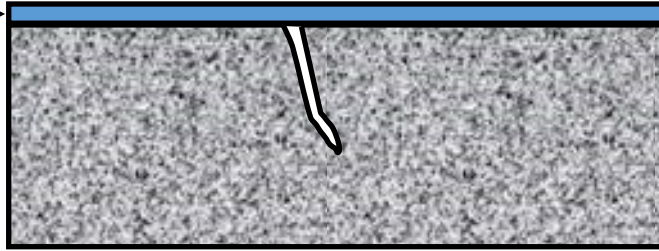
**Expansion Joints**  
Substrate gaps Up to 1/2" wide maximum

Scale: N.T.S. 03/29/2023

AP650VP-02

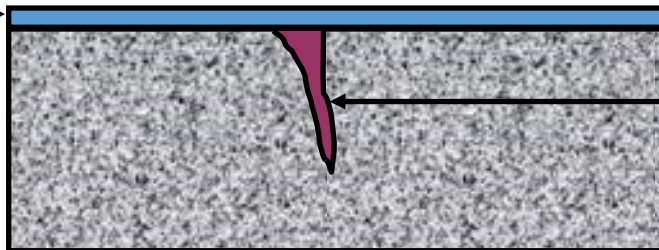
Option #1: Gaps up to 1/8" Max  
No Supplementary Sealant required

APOC AP-650 VP  
Air & Moisture  
Barrier



Option #2: Gaps up to 1" Max  
Flashing Sealant installed before Barrier

APOC AP-650 VP  
Air & Moisture  
Barrier



APOC AP-264 FLASH N'  
SEAL White Elastomeric  
Roof & Flashing Sealant

Notes:

- 1) Detail shows **APOC AP-650 VP Air & Moisture Barrier**. Substrate shown is for reference only. Acceptable substrates include Plywood, OSB, Concrete, CMU, Metal, and Exterior Grade Sheathing.
- 2) Flashing Material; **APOC AP-264 White Elastomeric Roof & Flashing Sealant**.
- 3) Install **APOC AP-650 VP Air & Moisture Barrier** to achieve a water-resistive barrier (WRB). Insulation and cladding not shown. Refer to local code ordinances for insulation and vapor barrier requirements.
- 4) Refer to product specific data sheets (TDS) and **APOC AP-650 VP Air & Moisture Barrier** guide specification for installation procedures.



4701 E. 7th Ave. Tampa, FL 33065  
(813) 367-4444 www.icpgroup.com

Manufacturer guide details are for reference purposes only. ICP does not assume responsibility for errors or deviations in design or engineering. Project specific verifications are recommended prior to installation.

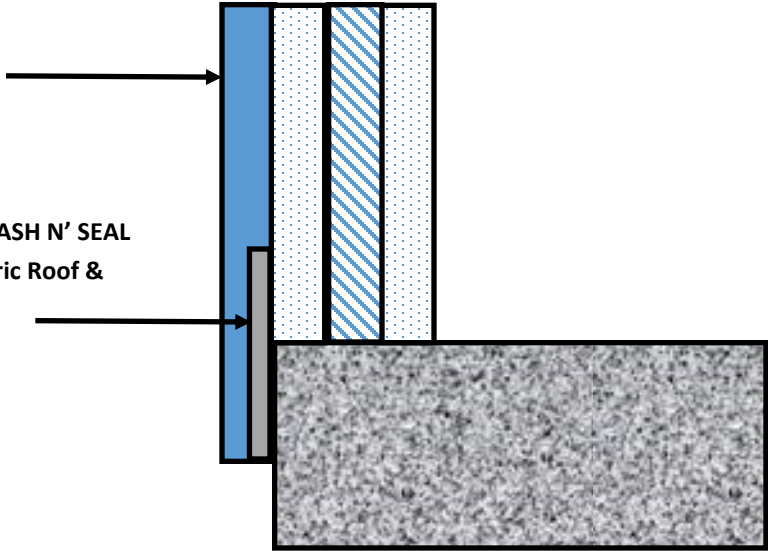
APOC AP-650 VP Air and Moisture Barrier

Defects  
Cracks up to 1" wide

Scale: N.T.S. 03/28/2023

AP650VP-03

**APOC AP-650 VP  
Air & Moisture  
Barrier**



**APOC AP-264 FLASH N' SEAL  
White Elastomeric Roof &  
Flashing Sealant**

**Notes:**

- 1) Detail shows **APOC AP-650 VP Air & Moisture Barrier**. Substrate shown is for reference only. Acceptable substrates include Plywood, OSB, Concrete, CMU, Metal, and Exterior Grade Sheathing.
- 2) Flashing Material; **APOC AP-264 White Elastomeric Roof & Flashing Sealant**.
- 3) Install **APOC AP-650 VP Air & Moisture Barrier** to achieve a water-resistive barrier (WRB). Insulation and cladding not shown. Refer to local code ordinances for insulation and vapor barrier requirements.
- 4) Refer to product specific data sheets (TDS) and **APOC AP-650 VP Air & Moisture Barrier** guide specification for installation procedures.



4701 E. 7th Ave. Tampa, FL 33065  
(813) 367-4444 www.icpgroup.com

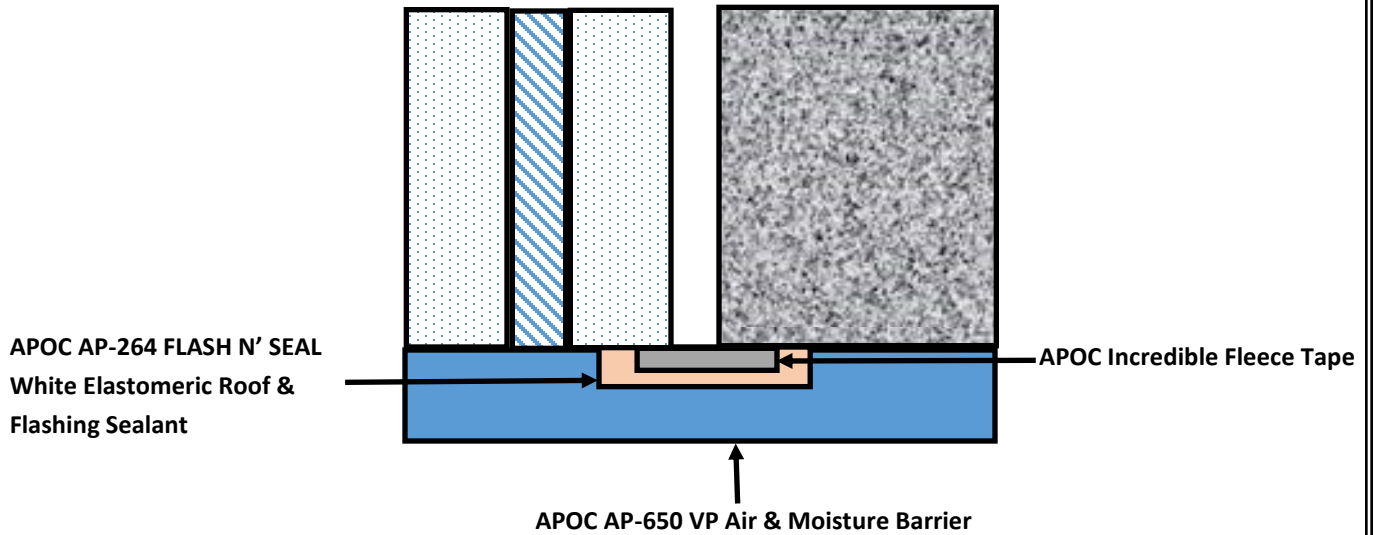
Manufacturer guide details are for reference purposes only. ICP does not assume responsibility for errors or deviations in design or engineering. Project specific verifications are recommended prior to installation.

**APOC AP-650 VP Air and Moisture Barrier**

**Wall Foundation**  
**Exterior Wall and Foundation Transition**  
**Slab On Greade—No Masonry Ledge**

Scale: N.T.S. 03/28/2023

**AP650VP-04**



Notes:

- 1) Detail shows **APOC AP-650 VP Air & Moisture Barrier**. Substrate shown is for reference only. Acceptable substrates include Plywood, OSB, Concrete, CMU, Metal, and Exterior Grade Sheathing.
- 2) Flashing Material; **APOC AP-264 White Elastomeric Roof & Flashing Sealant**.
- 3) Install **APOC AP-650 VP Air & Moisture Barrier** to achieve a water-resistive barrier (WRB). Insulation and cladding not shown. Refer to local code ordinances for insulation and vapor barrier requirements.
- 4) Refer to product specific data sheets (TDS) and **APOC AP-650 VP Air & Moisture Barrier** guide specification for installation procedures.



4701 E. 7th Ave. Tampa, FL 33065  
 (813) 367-4444 www.icpgroup.com

Manufacturer guide details are for reference purposes only. ICP does not assume responsibility for errors or deviations in design or engineering. Project specific verifications are recommended prior to installation.

## APOC AP-650 VP Air and Moisture Barrier

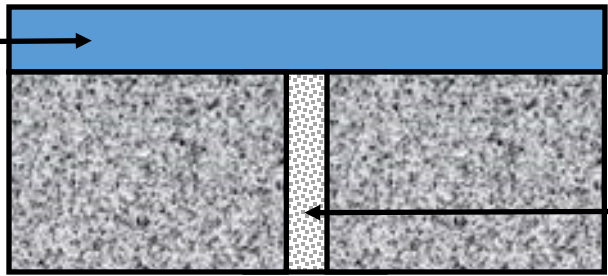
**Substrate Transition**  
 Dissimilar Substrate Transitions  
 Substrate gaps up to 1/2" maximum

Scale: N.T.S. 03/28/2023

AP650VP-05

**APOC AP-650 VP Air & Moisture Barrier**

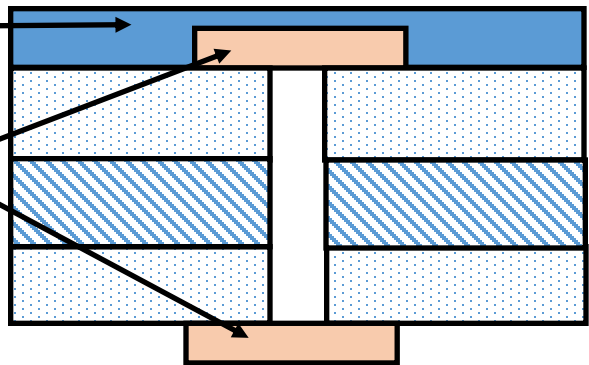
CMU Mortar Joints (Plan View)  
Strike Mortar Full and Flush



Fill grout & strike mortar full and flush with face of block.

**APOC AP-650 VP Air & Moisture Barrier**

**APOC AP-264 FLASH N' SEAL**  
White Elastomeric Roof & Flashing Sealant



Gaps up to 1/2" max.  
Flashing installed before WRB

Notes:

- 1) Detail shows **APOC AP-650 VP Air & Moisture Barrier**. Substrate shown is for reference only. Acceptable substrates include Plywood, OSB, Concrete, CMU, Metal, and Exterior Grade Sheathing.
- 2) Fill grout and strike CMU joints full and flush to create a continuous substrate. Refer to product specific technical data sheet for cure time prior to air barrier installation.
- 3) Install **APOC AP-650 VP Air & Moisture Barrier** to achieve a water-resistive barrier (WRB). Insulation and cladding not shown. Refer to local code ordinances for insulation and vapor barrier requirements.
- 4) Refer to product specific data sheets (TDS) and **APOC AP-650 VP Air & Moisture Barrier** guide specification for installation procedures.



4701 E. 7th Ave. Tampa, FL 33065  
(813) 367-4444 www.icpgroup.com

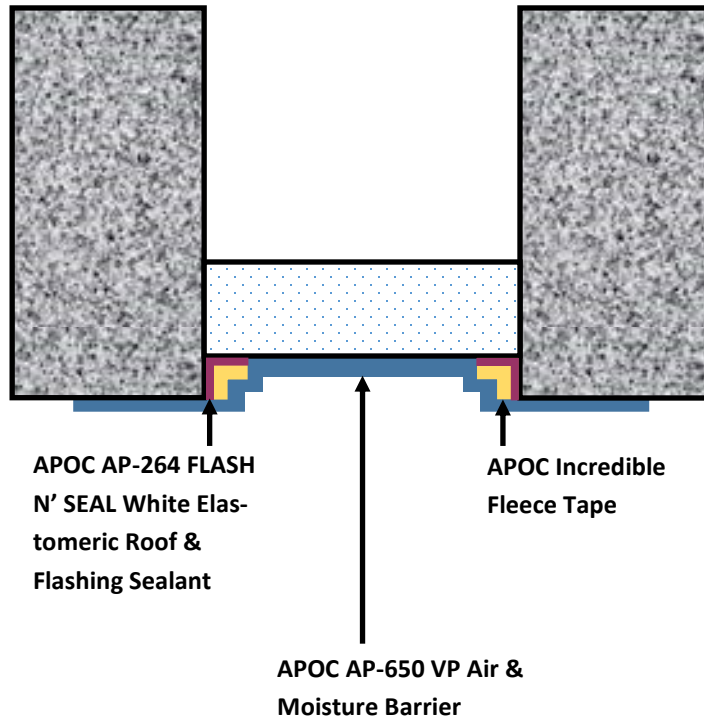
Manufacturer guide details are for reference purposes only. ICP does not assume responsibility for errors or deviations in design or engineering. Project specific verifications are recommended prior to installation.

**APOC AP-650 VP Air and Moisture Barrier**

**Non-Moving Joints**  
CMU Mortar joints and substrate gaps  
Up to 1/2" wide maximum

Scale: N.T.S. 03/29/2023

**AP650VP-06**



Notes:

- 1) Detail shows **APOC AP-650 VP Air & Moisture Barrier**. Substrate shown is for reference only. Acceptable substrates include Plywood, OSB, Concrete, CMU, Metal, and Exterior Grade Sheathing.
- 2) Flashing Material; **APOC AP-264 White Elastomeric Roof & Flashing Sealant**.
- 3) Install **APOC AP-650 VP Air & Moisture Barrier** to achieve a water-resistive barrier (WRB). Insulation and cladding not shown. Refer to local code ordinances for insulation and vapor barrier requirements.
- 4) Refer to product specific data sheets (TDS) and **APOC AP-650 VP Air & Moisture Barrier** guide specification for installation procedures.



4701 E. 7th Ave. Tampa, FL 33065  
 (813) 367-4444 www.icpgroup.com

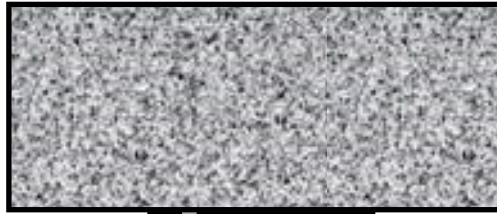
Manufacturer guide details are for reference purposes only. ICP does not assume responsibility for errors or deviations in design or engineering. Project specific verifications are recommended prior to installation.

## APOC AP-650 VP Air and Moisture Barrier

**Change in Plane**  
**Horizontal Deflection Joint**  
**Liquid Flashing Sealant**

Scale: N.T.S. 03/28/2023

**AP650VP-07**



**APOC AP-264 FLASH N' SEAL**  
**White Elastomeric Roof &**  
**Flashing Sealant**

**APOC AP-650 VP Air &**  
**Moisture Barrier**

Notes:

- 1) Detail shows **APOC AP-650 VP Air & Moisture Barrier**. Substrate shown is for reference only. Acceptable substrates include Plywood, OSB, Concrete, CMU, Metal, and Exterior Grade Sheathing.
- 2) Flashing Material; **APOC AP-264 White Elastomeric Roof & Flashing Sealant**.
- 3) Install **APOC AP-650 VP Air & Moisture Barrier** to achieve a water-resistive barrier (WRB). Insulation and cladding not shown. Refer to local code ordinances for insulation and vapor barrier requirements.
- 4) Refer to product specific data sheets (TDS) and **APOC AP-650 VP Air & Moisture Barrier** guide specification for installation procedures.



4701 E. 7th Ave. Tampa, FL 33065  
 (813) 367-4444 www.icpgroup.com

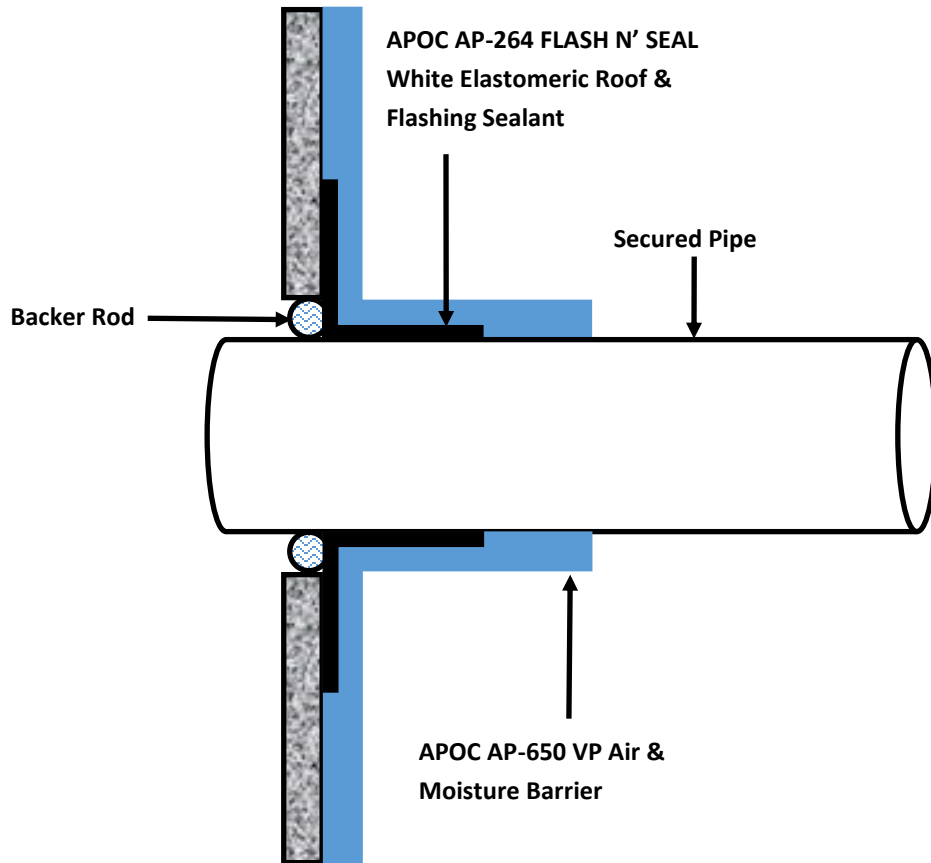
Manufacturer guide details are for reference purposes only. ICP does not assume responsibility for errors or deviations in design or engineering. Project specific verifications are recommended prior to installation.

**APOC AP-650 VP Air and Moisture Barrier**

**Roof/Wall**  
**Exterior Wall and Roof Transition**

Scale: N.T.S. 04/12/2023

**AP650VP-08**



Notes:

- 1) Detail shows **APOC AP-650 VP Air & Moisture Barrier**. Substrate shown is for reference only. Acceptable substrates include Plywood, OSB, Concrete, CMU, Metal, and Exterior Grade Sheathing.
- 2) Flashing Material; **APOC AP-264 White Elastomeric Roof & Flashing Sealant**.
- 3) Install **APOC AP-650 VP Air & Moisture Barrier** to achieve a water-resistive barrier (WRB). Insulation and cladding not shown. Refer to local code ordinances for insulation and vapor barrier requirements.
- 4) Refer to product specific data sheets (TDS) and **APOC AP-650 VP Air & Moisture Barrier** guide specification for installation procedures.



4701 E. 7th Ave. Tampa, FL 33065  
 (813) 367-4444 www.icpgroup.com

Manufacturer guide details are for reference purposes only. ICP does not assume responsibility for errors or deviations in design or engineering. Project specific verifications are recommended prior to installation.

## APOC AP-650 VP Air and Moisture Barrier

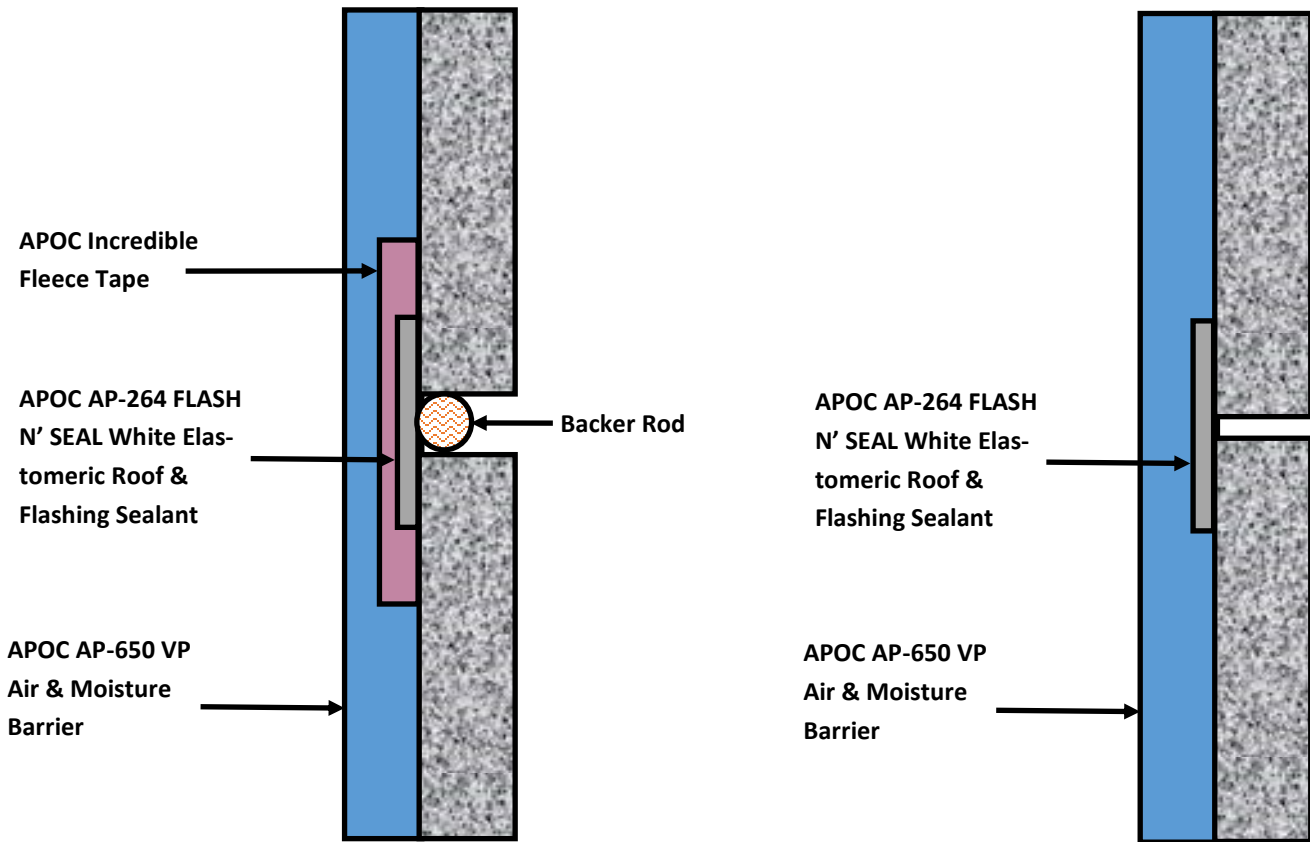
**Penetration**  
 Substrate Gaps up to 3/4" wide maximum  
 Liquid Flashing Sealant

Scale: N.T.S. 03/28/2023

**AP650VP-09**

Option #1: For Joints with 0.25" gap or greater

Option #2: For Joints less than 0.25" gap



Notes:

- 1) Detail shows **APOC AP-650 VP Air & Moisture Barrier**. Substrate shown is for reference only. Acceptable substrates include Plywood, OSB, Concrete, CMU, Metal, and Exterior Grade Sheathing.
- 2) Flashing Material; **APOC AP-264 White Elastomeric Roof & Flashing Sealant**.
- 3) Install **APOC AP-650 VP Air & Moisture Barrier** to achieve a water-resistive barrier (WRB). Insulation and cladding not shown. Refer to local code ordinances for insulation and vapor barrier requirements.
- 4) Refer to product specific data sheets (TDS) and **APOC AP-650 VP Air & Moisture Barrier** guide specification for installation procedures.



4701 E. 7th Ave. Tampa, FL 33065  
(813) 367-4444 www.icpgroup.com

Manufacturer guide details are for reference purposes only. ICP does not assume responsibility for errors or deviations in design or engineering. Project specific verifications are recommended prior to installation.

**APOC AP-650 VP Air and Moisture Barrier**

**Deflection Joint**  
**Horizontal Deflection Joint**  
**Liquid Flashing Sealant**

Scale: N.T.S. 03/28/2023

**AP650VP-10**