

CMU AIR BARRIER DETAIL

SCALE: 1 1/2" = 1'-0"



ICYNENE™

1-800-758-7325

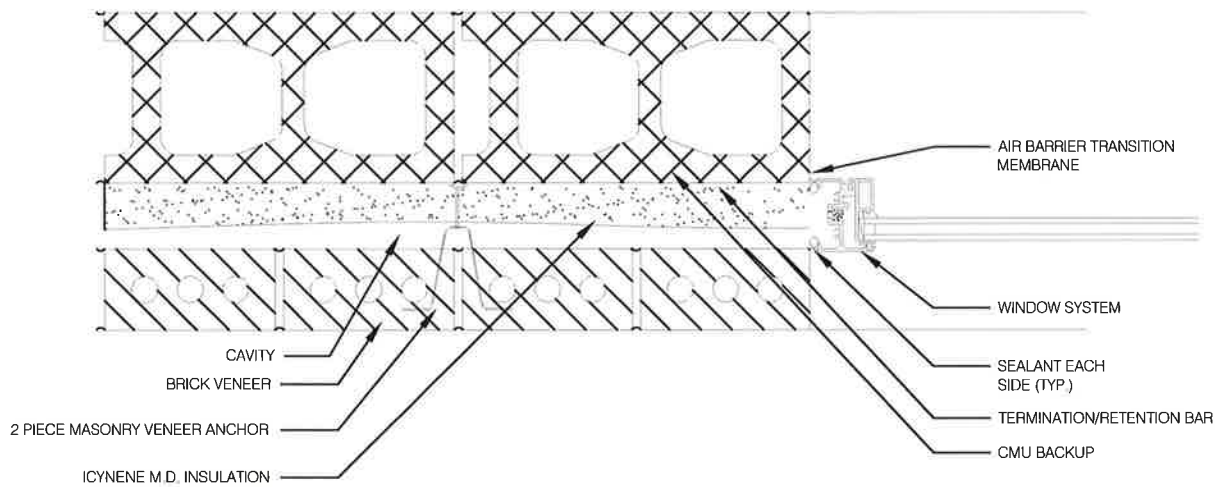
www.icynene.com

**CMU AIR BARRIER ICYNENE M.D.
FOUNDATION INTERSECTION**

DETAIL-1

JULY 2013

ICY_ENG_1001



CMU AIR BARRIER DETAIL

SCALE: 1 1/2" = 1'-0"



ICYNENE

1-800-758-7325

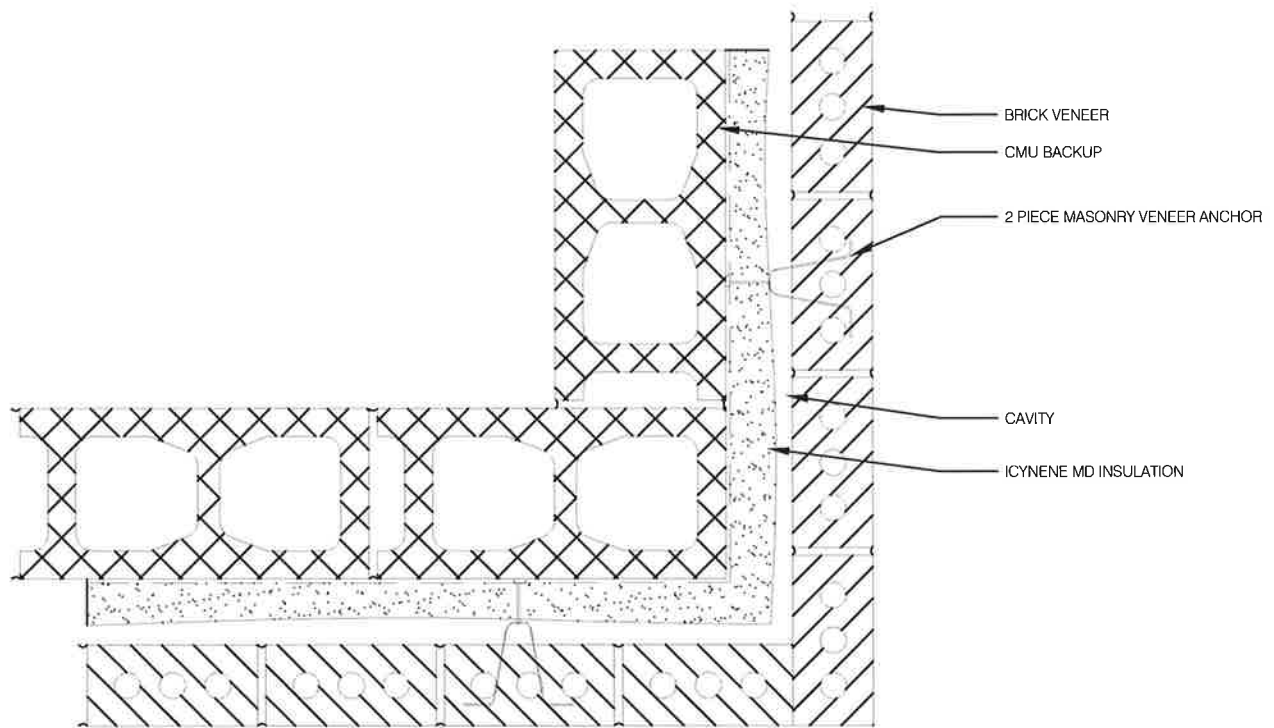
www.icynene.com

**CMU AIR BARRIER ICYNENE M.D.
JAMB DETAIL**

DETAIL-05

JULY 2013

ICY_ENG_1005



CMU AIR BARRIER DETAIL

SCALE: 1 1/2" = 1'-0"



ICYNENE

1-800-758-7325

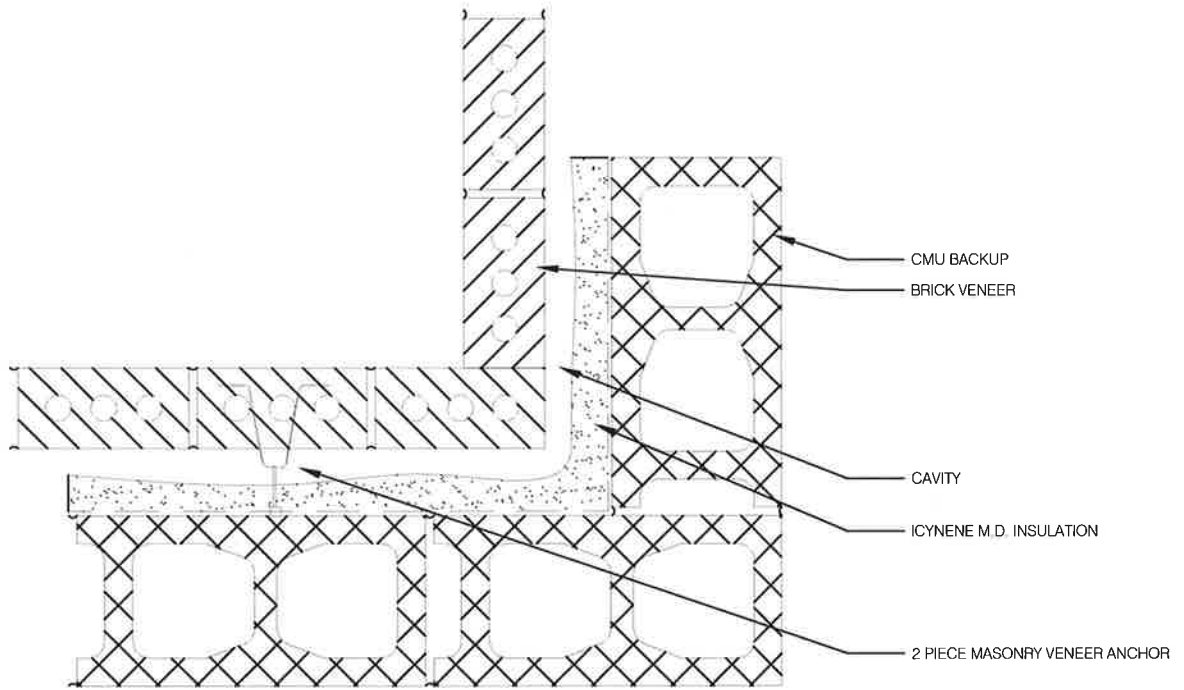
www.icynene.com

CMU AIR BARRIER ICYNENE M.D.
OUTSIDE CORNER

DETAIL-06

JULY 2013

ICY_ENG_1006



CMU AIR BARRIER DETAIL

SCALE: 1 1/2" = 1'-0"



ICYNENE

1-800-758-7325

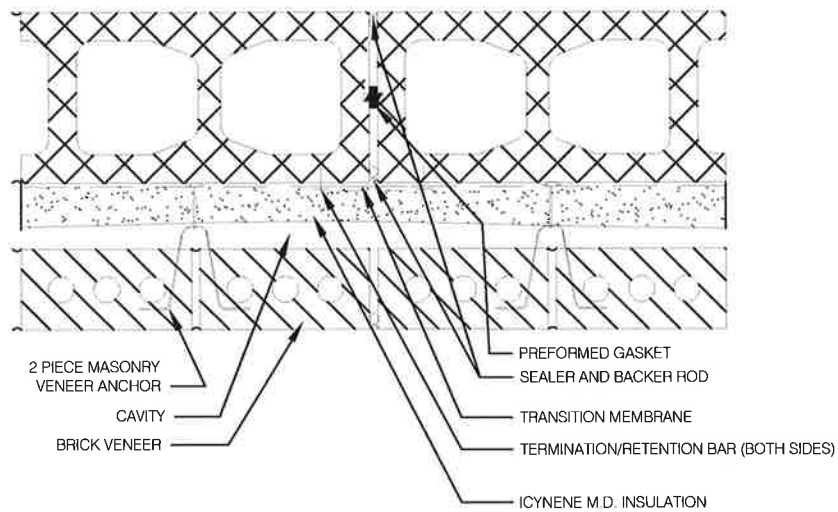
www.icynene.com

**CMU AIR BARRIER ICYNENE M.D.
INSIDE CORNER**

DETAIL-07

JULY 2013

ICY_ENG_1007



CMU AIR BARRIER DETAIL

SCALE: 1 1/2" = 1'-0"



ICYNENE™

1-800-758-7325

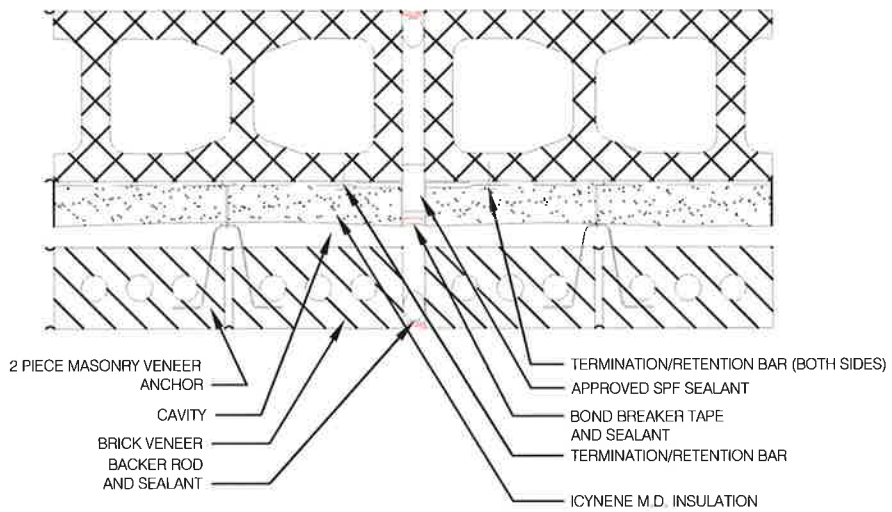
www.icynene.com

CMU AIR BARRIER ICYNENE M.D.
CONTROL JOINT

DETAIL-08

JULY 2013

ICY_ENG_1008



CMU AIR BARRIER DETAIL

SCALE: 1 1/2" = 1'-0"



ICYNENE

1-800-758-7325

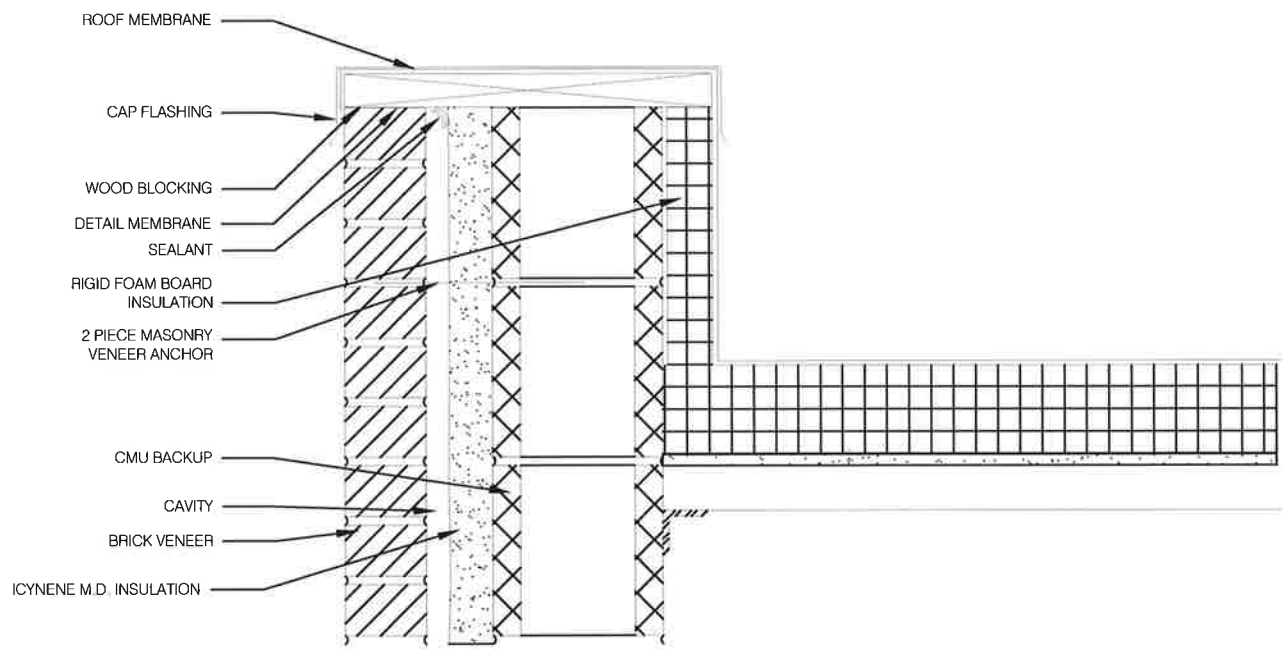
www.icynene.com

CMU AIR BARRIER ICYNENE M.D.
CONTROL JOINT

DETAIL-09

JULY 2013

ICY_ENG_1009



CMU AIR BARRIER DETAIL

SCALE: 1 1/2" = 1'-0"



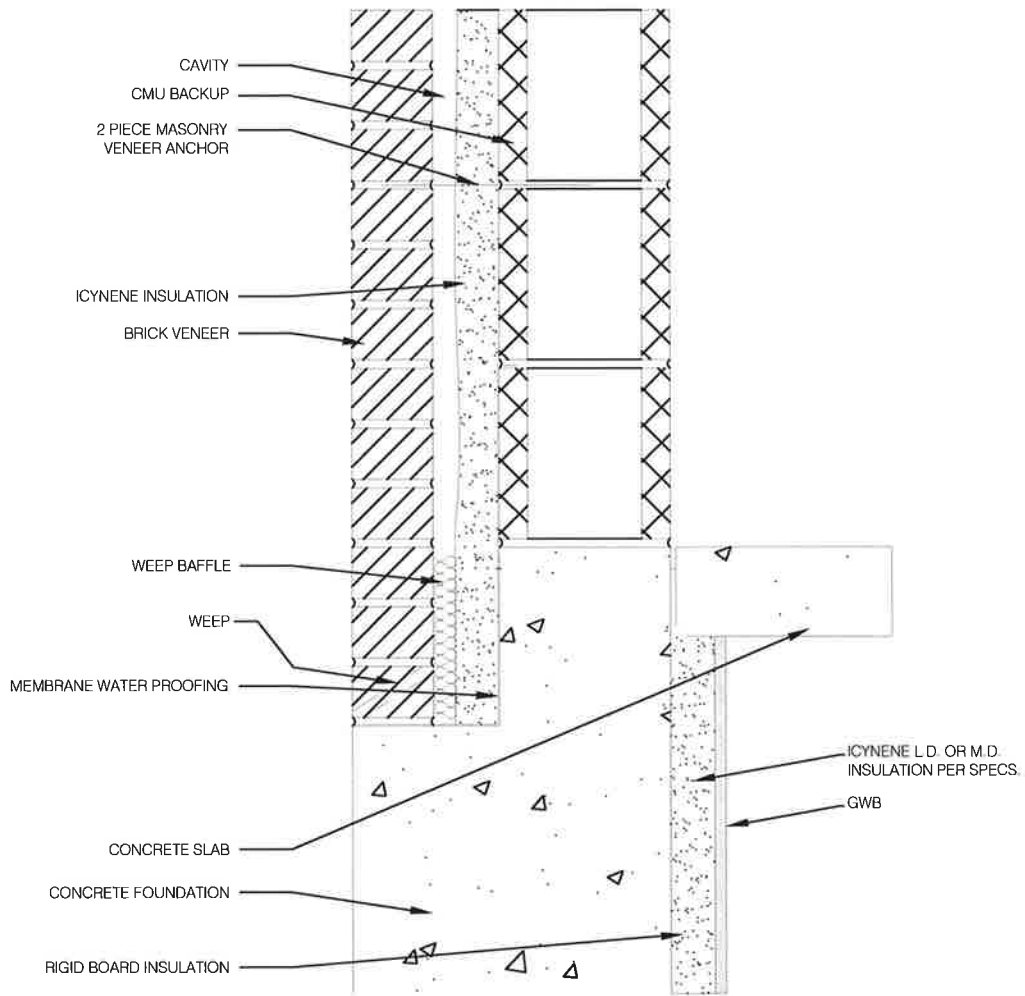
ICYNENE™
 1-800-758-7325
 www.icynene.com

**CMU AIR BARRIER ICYNENE M.D.
 ROOF/WALL INTERSECTION
 (WITH PARAPET)**

DETAIL-11

JULY 2013

ICY_ENG_1011



CMU AIR BARRIER DETAIL

SCALE: 1 1/2" = 1'-0"



ICYNENE

1-800-758-7325

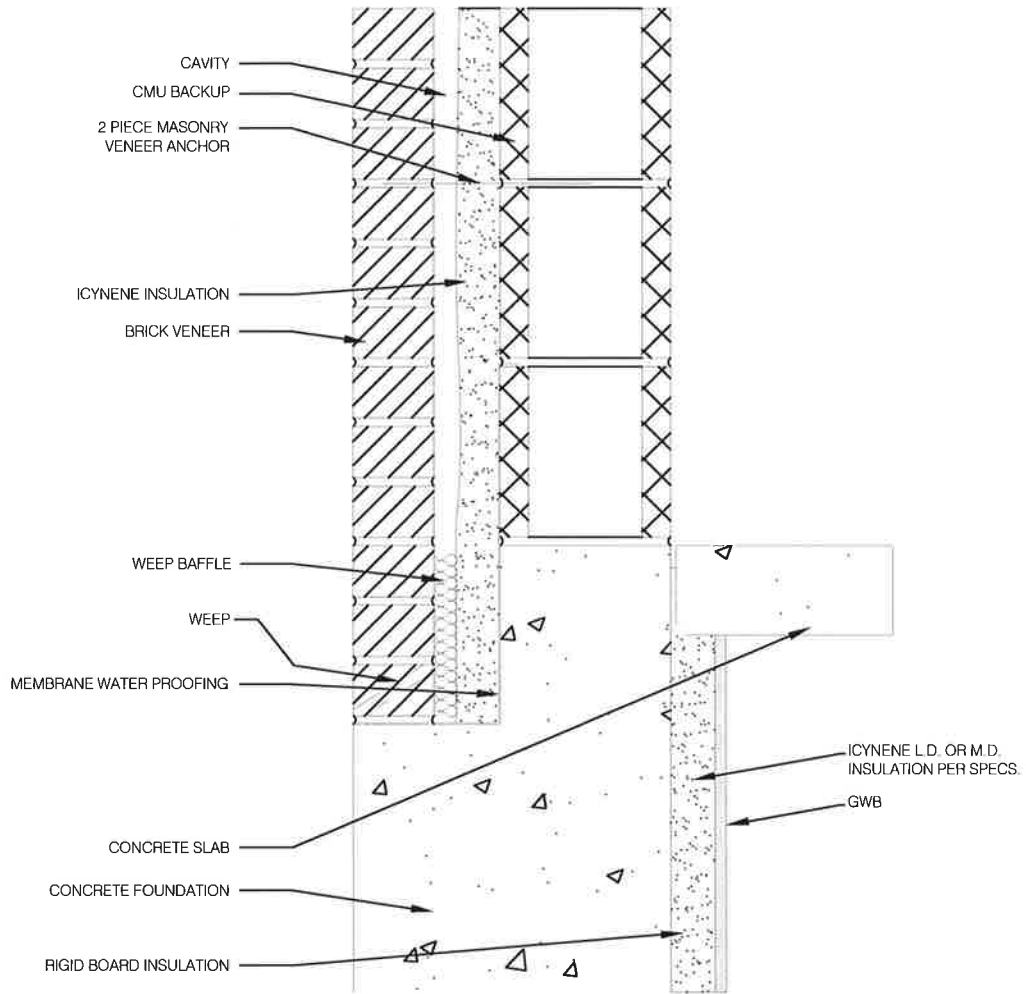
www.icynene.com

CMU AIR BARRIER ICYNENE M.D.
FOUNDATION INTERSECTION

DETAIL-1

JULY 2013

ICY_ENG_1001



CMU AIR BARRIER DETAIL

SCALE: 1 1/2" = 1'-0"



ICYNENE™

1-800-758-7325

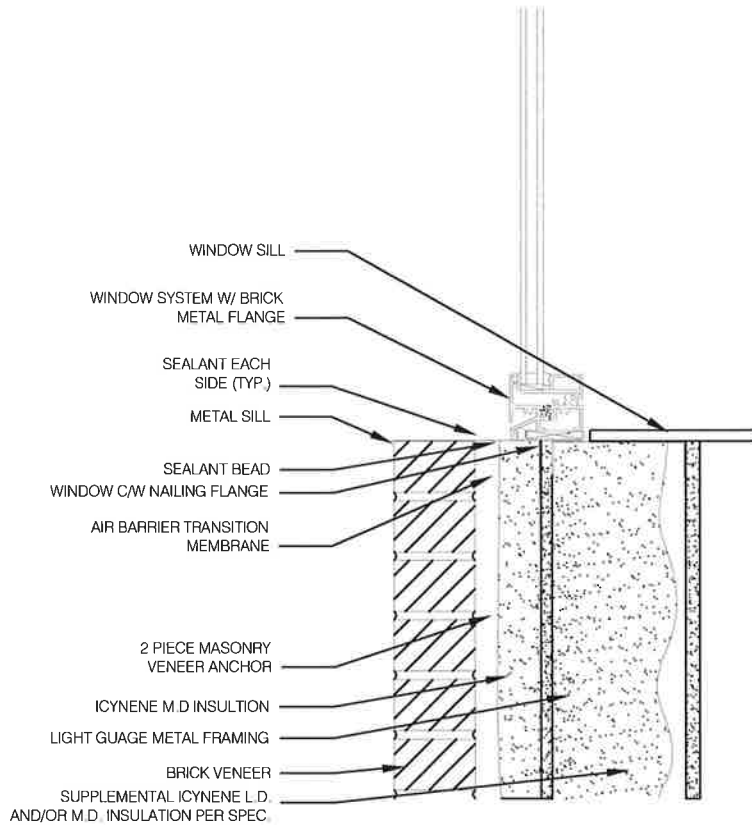
www.icynene.com

**CMU AIR BARRIER ICYNENE M.D.
FOUNDATION INTERSECTION**

DETAIL-1

JULY 2013

ICY_ENG_1001



LGMF AIR BARRIER DETAIL

SCALE: 1 1/2" = 1'-0"



ICYNENE

1-800-758-7325

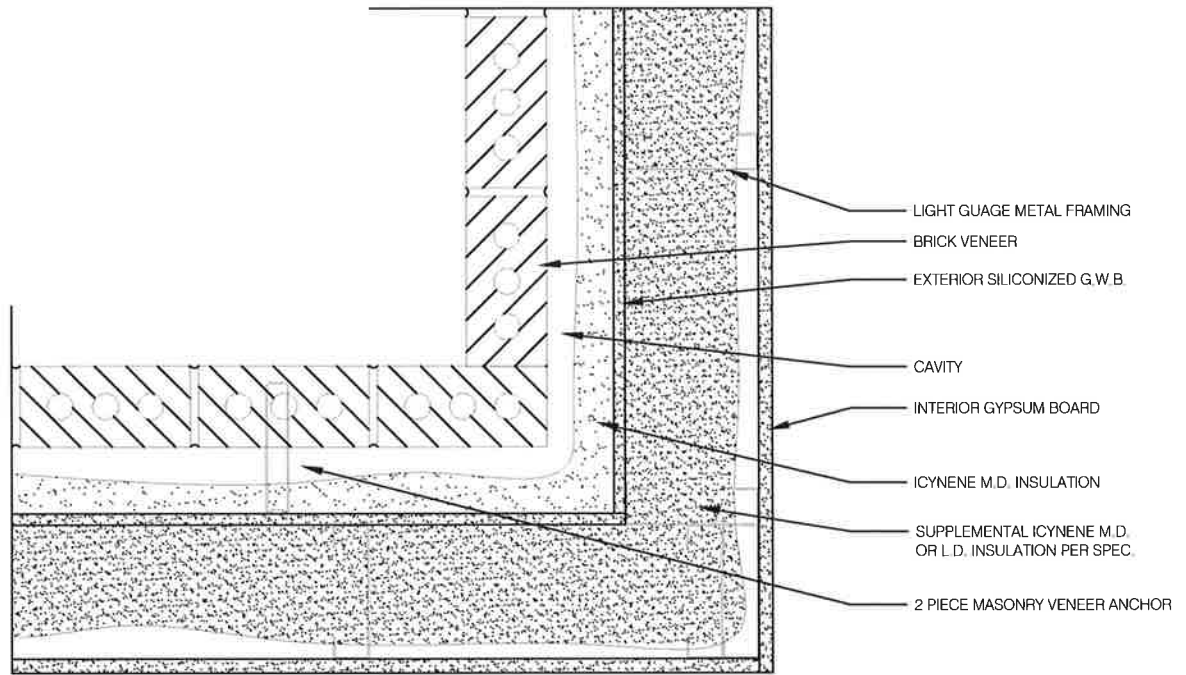
www.icynene.com

LGMF AIR BARRIER ICYNENE M.D.
WINDOW SILL

DETAIL-3

JULY 2013

ICY_ENG_1003



LGMF AIR BARRIER DETAIL

SCALE: 1 1/2" = 1'-0"



ICYNENE

1-800-758-7325

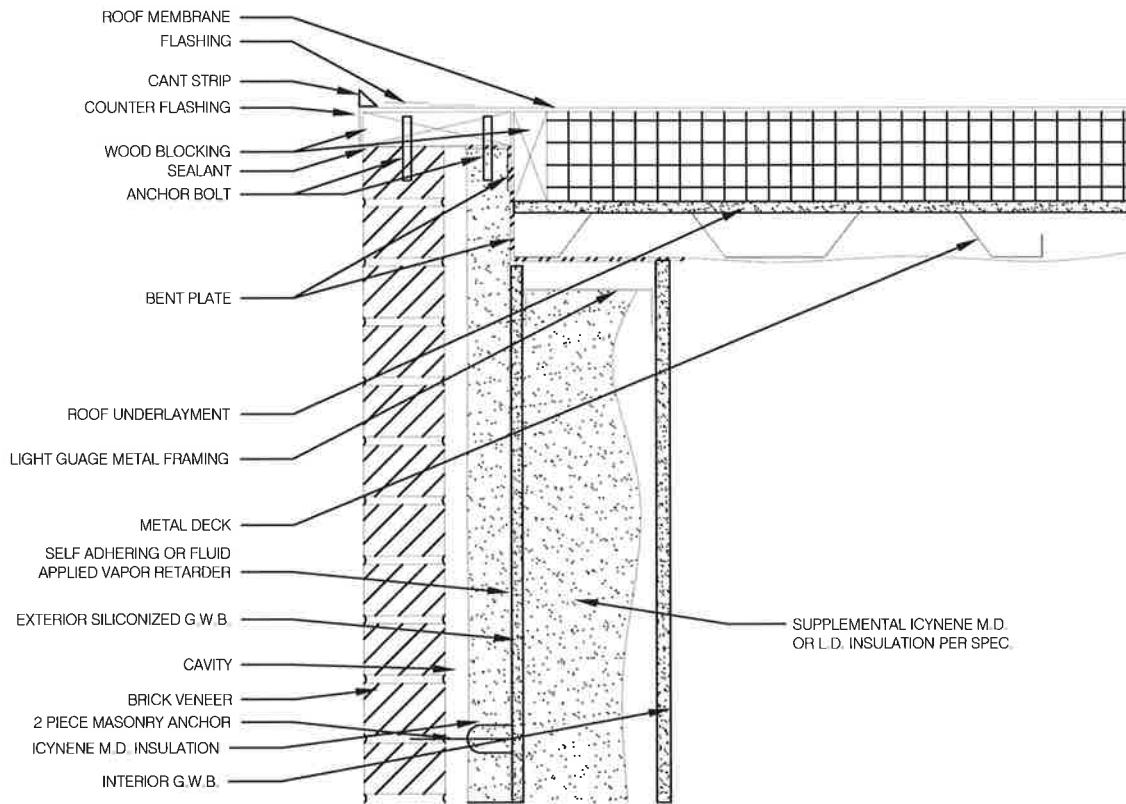
www.icynene.com

LGMF AIR BARRIER ICYNENE M.D.
INSIDE CORNER

DETAIL-7

JULY 2013

ICY_ENG_1007



LGMF AIR BARRIER DETAIL

SCALE: 1 1/2" = 1'-0"



ICYNENE

1-800-758-7325

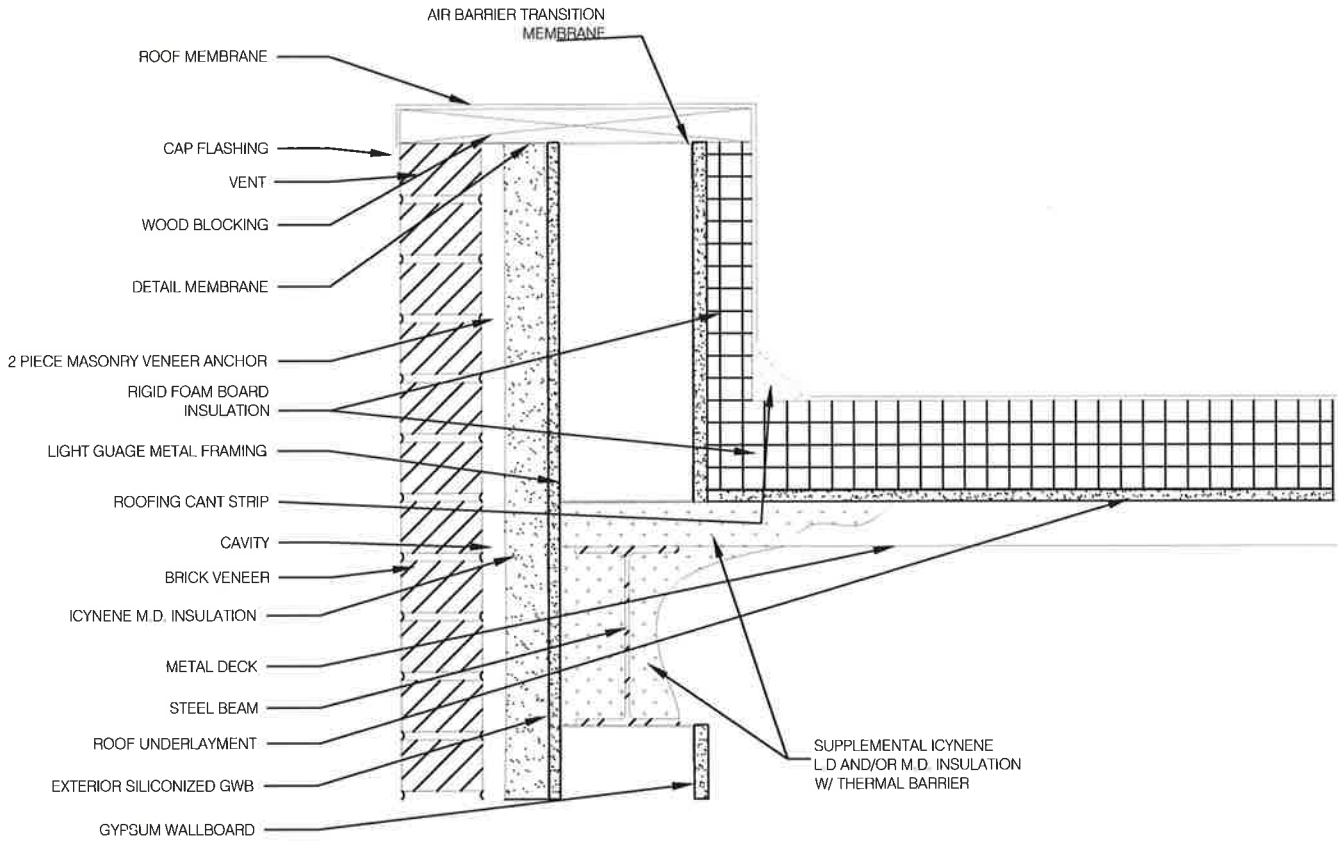
www.icynene.com

LGMF AIR BARRIER ICYNENE M.D.
 ROOF/WALL INTERSECTION
 (NO PARAPET)

DETAIL-9

JULY 2013

ICY_ENG_1009



LGMF AIR BARRIER DETAIL

SCALE: 1 1/2" = 1'-0"



ICYNENE

1-800-758-7325

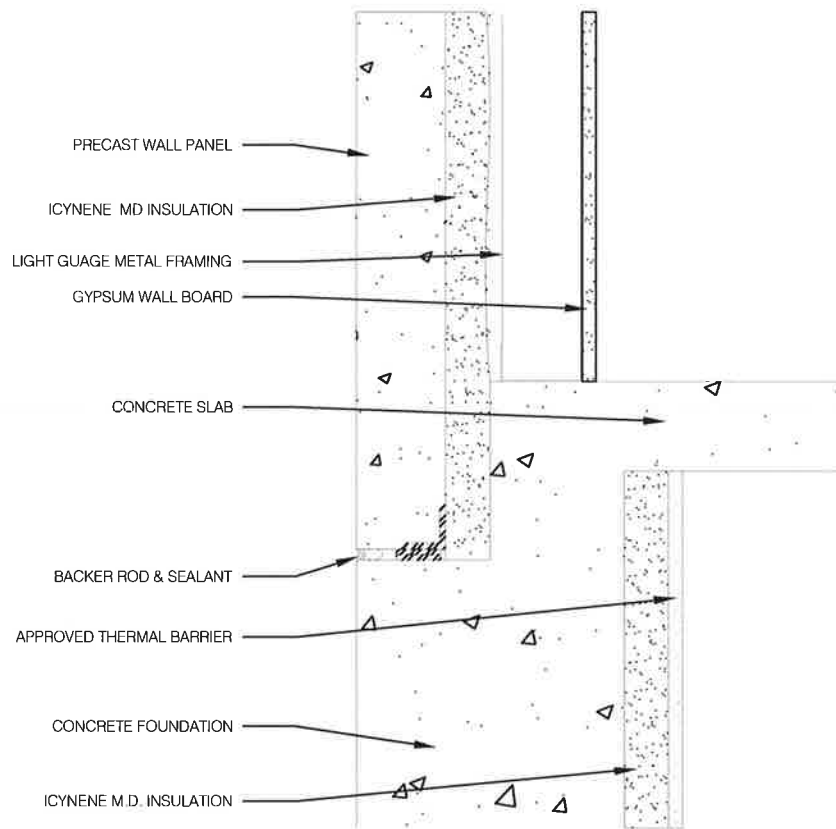
www.icynene.com

LGMF AIR BARRIER ICYNENE M.D.
ROOF/WALL INTERSECTION W/ PARAPET

DETAIL-10

JULY 2013

ICY_ENG_10



PRECAST WALL AIR BARRIER

SCALE: 1 1/2" = 1'-0"



ICYNENE™

1-800-758-7325

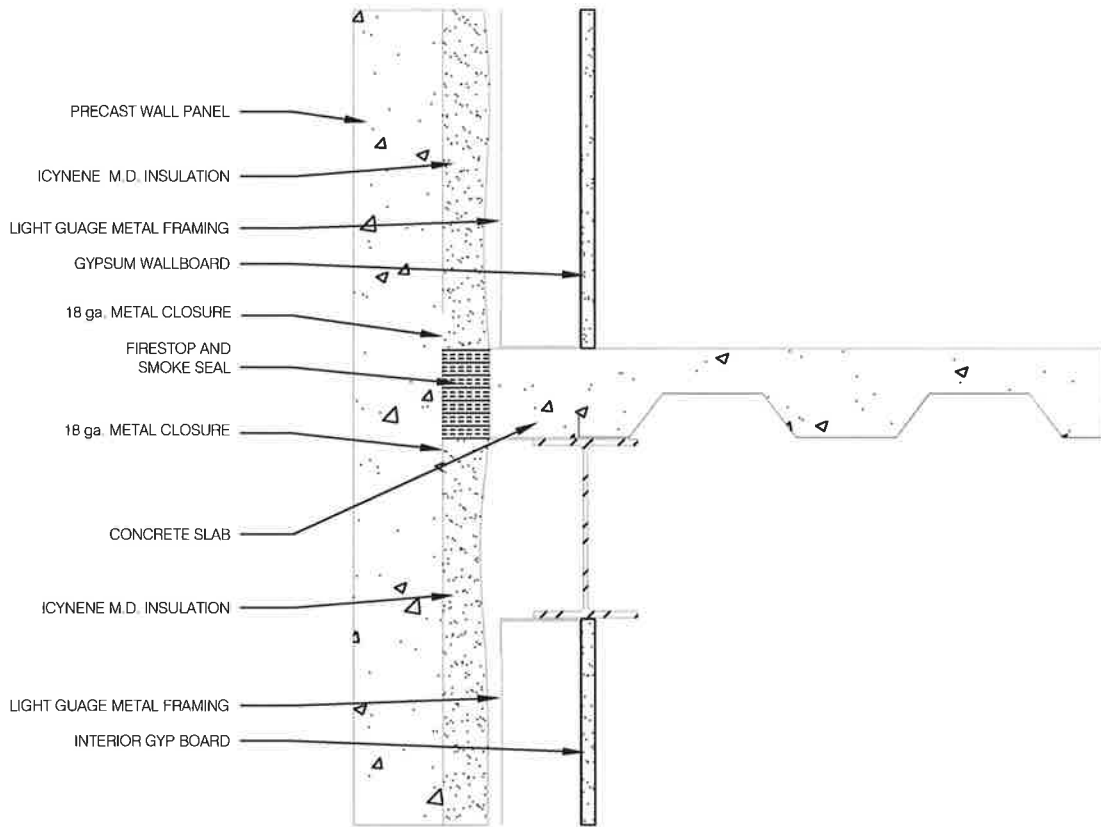
www.icynene.com

PRECAST WALL AIR BARRIER FOUNDATION WALL INTERSECTION

DETAIL-1

JULY 2013

ICY_ENG_1001



PRECAST WALL AIR BARRIER DETAIL

SCALE: 1 1/2" = 1'-0"



ICYNENE

1-800-758-7325

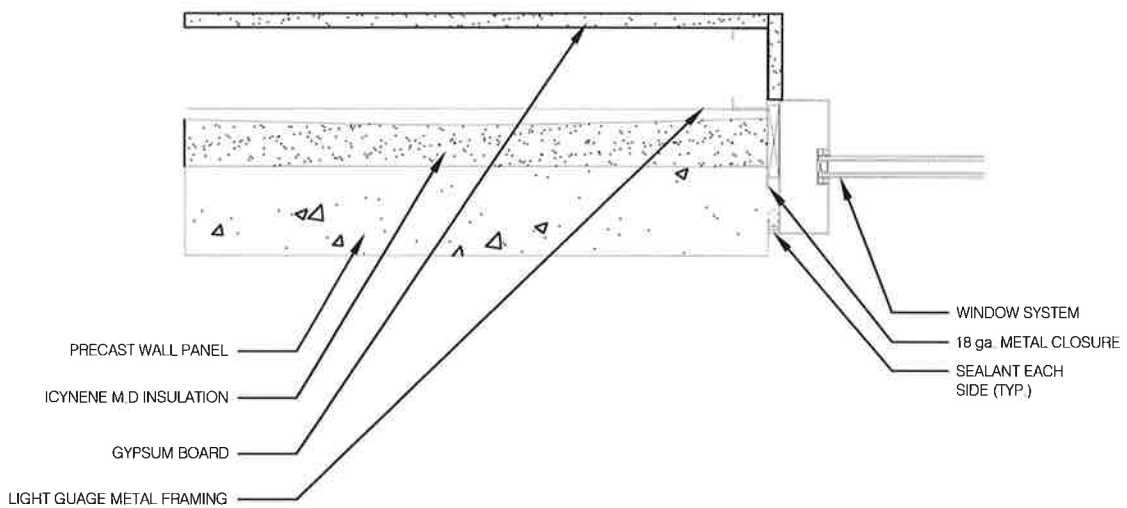
www.icynene.com

PRECAST WALL AIR BARRIER INTERSTOREY FLOOR INTERSECTION

DETAIL-2

JULY 2013

ICY_ENG_1002



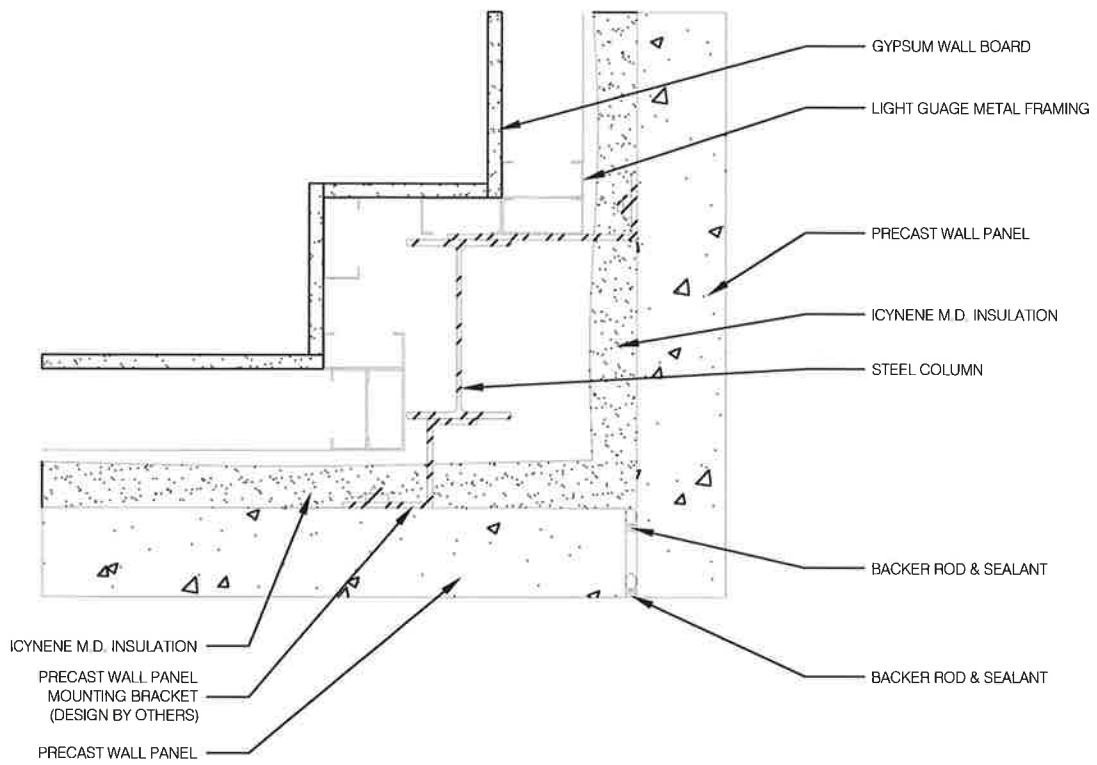
PRECAST WALL AIR BARRIER DETAIL

SCALE: 1 1/2" = 1'-0"



**PRECAST WALL AIR BARRIER
 WINDOW JAMB (PLAN VIEW)**

DETAIL-5
JULY 2013
ICY_ENG_1005



PRECAST WALL AIR BARRIER DETAIL

SCALE: 1 1/2" = 1'-0"



ICYNENE™

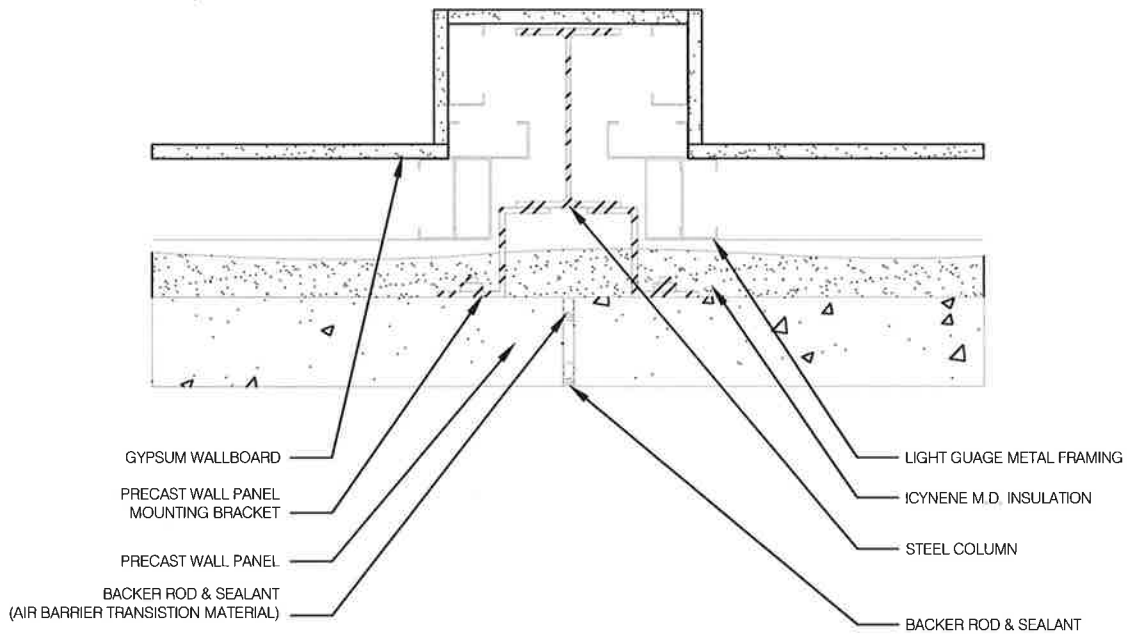
1-800-758-7325

PRECAST WALL AIR BARRIER OUTSIDE CORNER

DETAIL-6

JULY 2013

ICY_ENG_1006



PRECAST WALL AIR BARRIER DETAIL

SCALE: 1 1/2" = 1'-0"



ICYNENE™

1-800-758-7325

PRECAST WALL AIR BARRIER TYPICAL PANEL JOINT

DETAIL-7

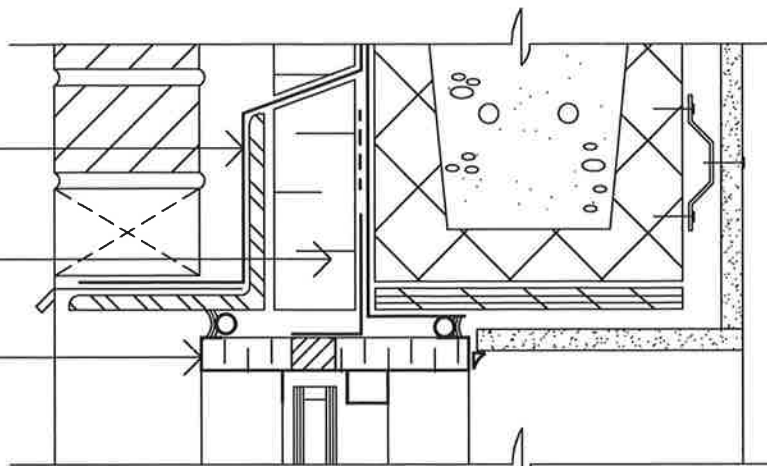
JULY 2013

ICY_ENG_1007

Blueskin® TWF
Thru-Wall Flashing
Sheet

Blueskin® SA or TG

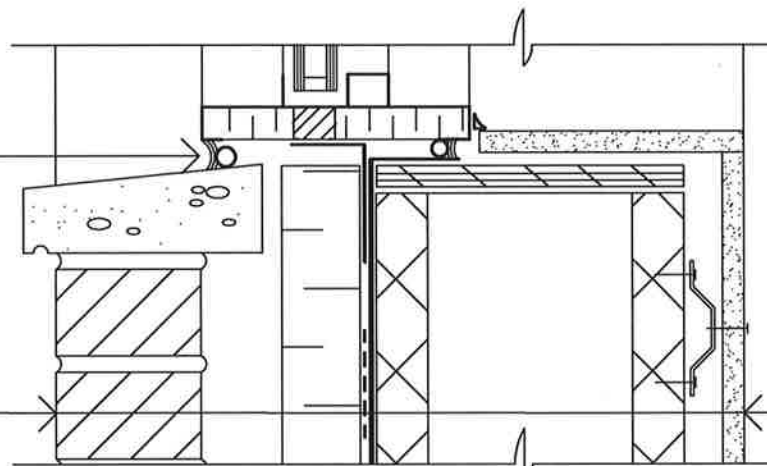
Factory Insulated
Window Frame



Head (cross-section)

HE 925 BES Sealant
(or) Polybitume® 570-05
w/ Backer Rod

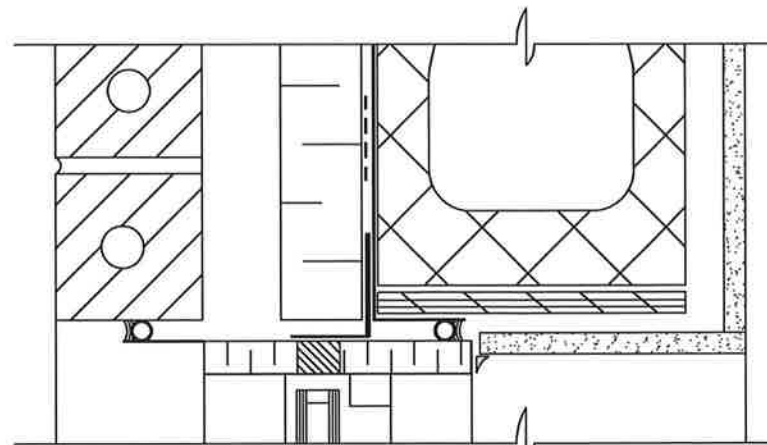
Brick Veneer
Air Space
Insulation
Blueskin® SA or TG
Blueskin® Adhesive
Concrete Masonry Unit
Furring
Gypsum Board



Sill (cross-section)

Notes:

1. A continuous plane of air tightness is achieved when the window frame thermal break and air/vapour barrier are well integrated. There are several possibilities for window attachment.



Jamb (plan)

Blueskin® SA or Blueskin® TG

**WINDOW A
DETAILS**

BRICK VENEER / CONC. BLK. WALL

Scale: N.T.S.

Plot: 1:5

Issued: 08-14-97

Revision: 07

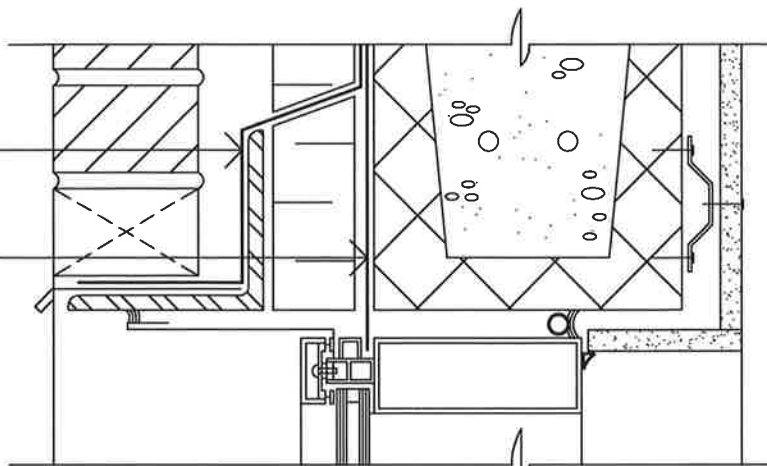
AB-13B96



15 Walisend Drive, Toronto ON M1E 3X6
Technical Services - 800-486-1278
Email: techservices@henry.com
www.ca.henry.com

Blueskin® TWF
Thru-Wall Flashing
Sheet

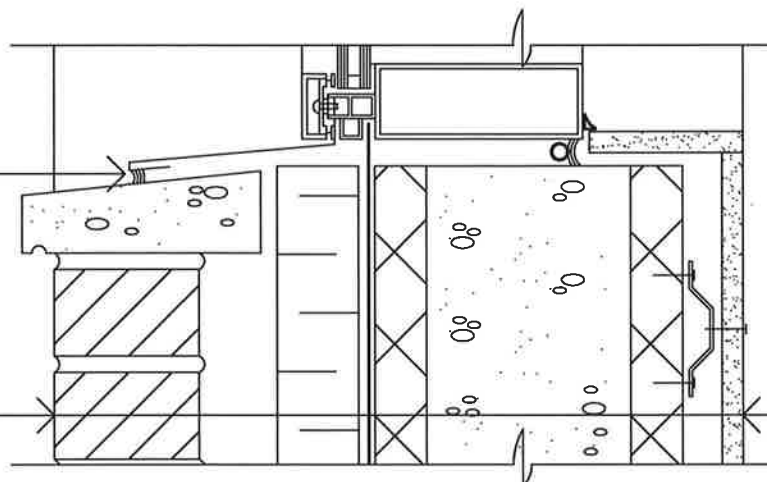
Blueskin® SA or TG



Head (cross-section)

HE 925 BES Sealant
(or) Polybitume® 570-05

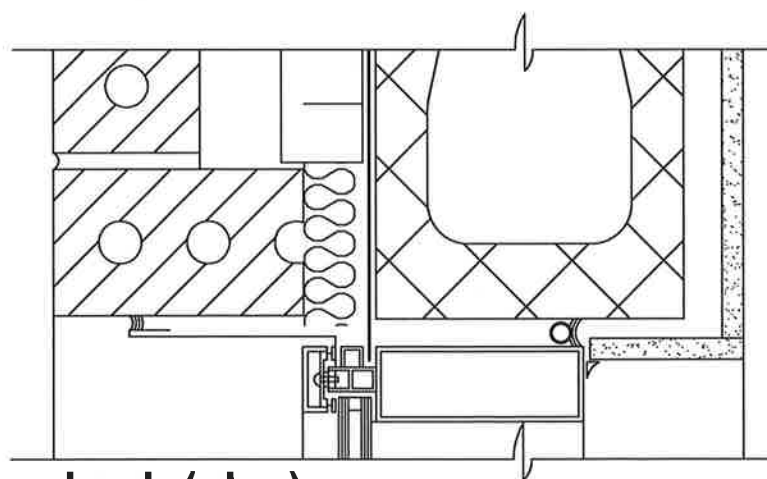
Brick Veneer
Air Space
Insulation
Blueskin® SA or TG
Blueskin® Adhesive
Concrete Masonry Unit
Furring
Gypsum Board



Sill (cross-section)

Notes:

1. A continuous plane of air tightness is achieved when the window frame thermal break and air/vapour barrier are well integrated.
2. Extend Blueskin into window frame and clamp tight.



Jamb (plan)

Blueskin® SA or Blueskin® TG

**WINDOW B
DETAILS**

BRICK VENEER / CONC. BLK. WALL

Scale: N.T.S.

Plot: 1:5

Issued: 08-14-97

Revision: 07

AB-14B96



15 Wallisend Drive, Toronto ON M1E 3X6
Technical Services - 800-486-1278
Email: techservices@henry.com
www.ca.henry.com

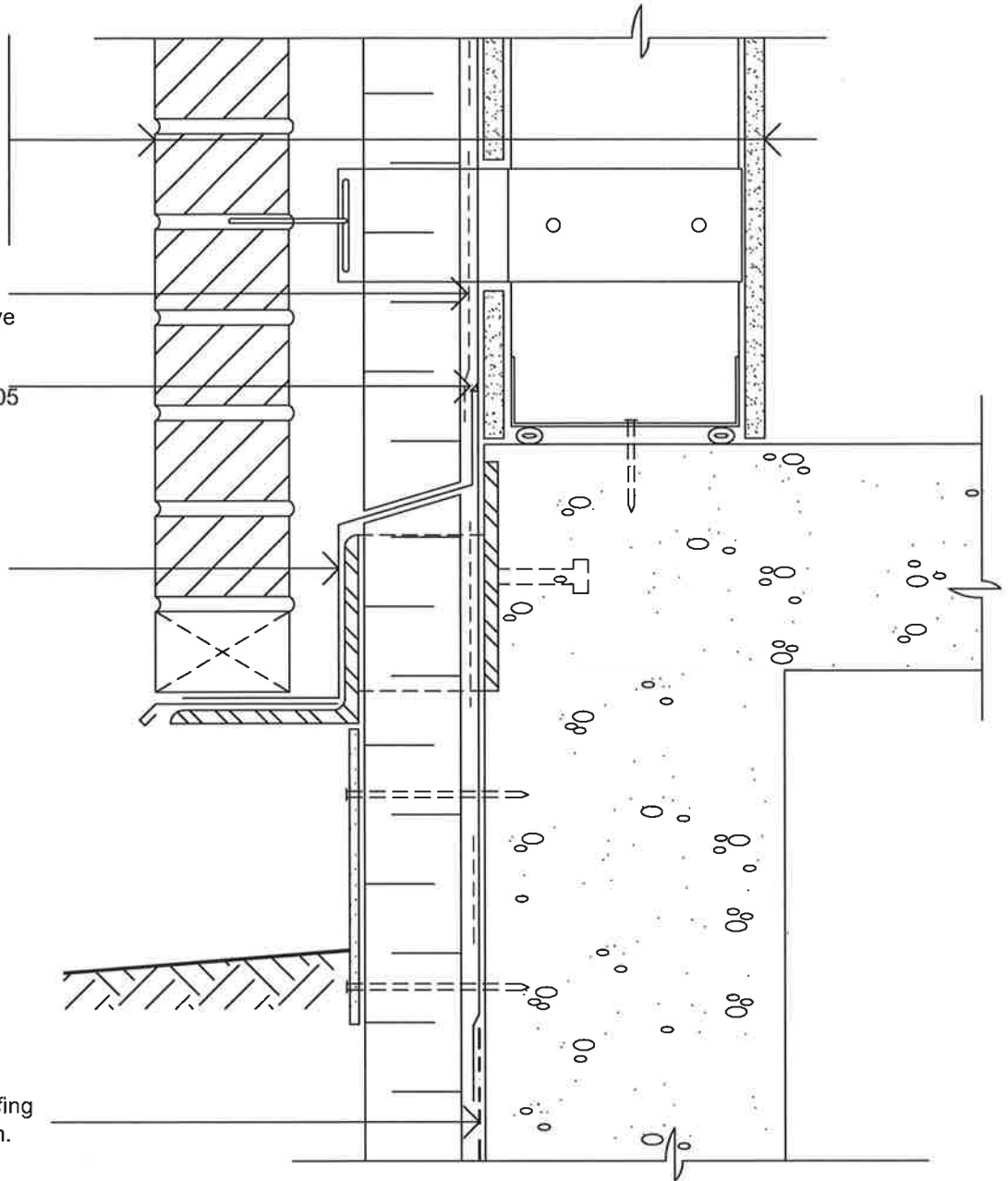
Brick Veneer
 Air Space
 Insulation
 Blueskin® SA or TG
 Blueskin® Adhesive
 Exterior Sheathing
 Steel Stud
 Gypsum Board

Air-Bloc 21 or 230-21
 Rigid Insulation Adhesive

HE 925 BES Sealant
 (or) Polybitume® 570-05

Blueskin® TWF
 Thru-Wall Flashing
 Sheet

Henry-Bakor waterproofing
 or dampproofing system.



Notes:

1. Blueskin® TWF is a self-adhering sheet used for thru-wall flashing applications. Blueskin® TWF is to be applied to a prepared and primed substrate. Seal upper edge of Blueskin® TWF with HE925 BES Sealant or Polybitume® 570-05.
2. An alternate detail for the thru-wall flashing includes extending the membrane across the top of the floor slab prior to installing the lower track. Turn membrane up face of track prior to fastening interior gypsum board.
3. When the brick-tie system is installed prior to the Blueskin® SA, the membrane is cut, fitted and sealed with Air-Bloc 21 around each tie projection. A 50mm(2") lap is needed over the ties.
4. It is recommended that the air/vapour barrier tie into the waterproofing or dampproof membranes.

Blueskin® SA or Blueskin® TG

**FOUNDATION
 DETAIL**

BRICK VENEER / STEEL STUD WALL

Scale: N.T.S.

Plot: 1:5

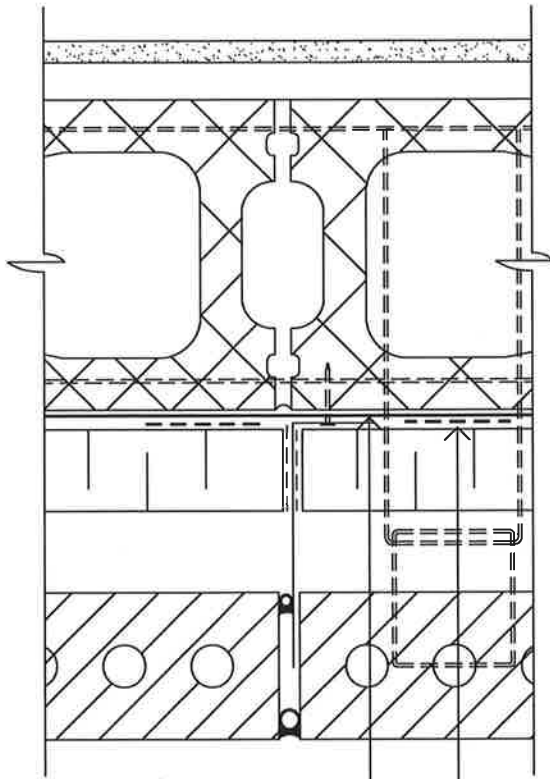
Issued: 08-14-97

Revision: 07

AB-10B96

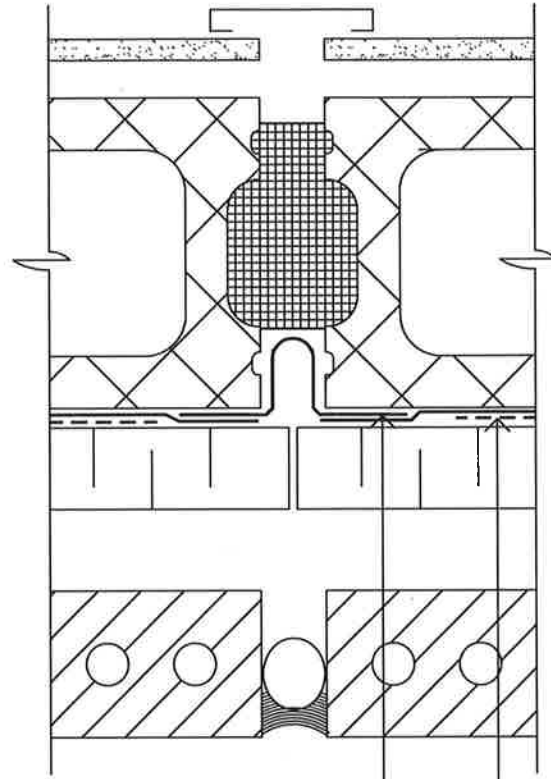


15 Wallsend Drive, Toronto ON M1E 3X6
 Technical Services - 800-486-1278
 Email: techservices@henry.com
 www.ca.henry.com



Blueskin® membrane
Air-Bloc 21 or 230-21

Control Joint (plan)



Blueskin® membrane
Air-Bloc 21 or 230-21

Expansion Joint (plan)

Notes:

1. Blueskin® is self-gasketing when self-tapping fastening systems are used.
2. No special treatment of the air/vapour barrier is required at masonry veneer control joints. Cavity wall compartmentalization may be achieved using a metal strip extending floor to floor at control joints. Alternatively, use mineral wool insulation or a strip of Blueskin® membrane.
3. At expansion joints loop the Blueskin membrane into the opening and lap over both sides.
4. Alternatively, use mineral wool insulation or a strip of Blueskin® membrane.

Blueskin® SA or Blueskin® TG

PLAN DETAILS

BRICK VENEER / CONC. BLK. WALL

Scale: N.T.S.

Plot: 1:5

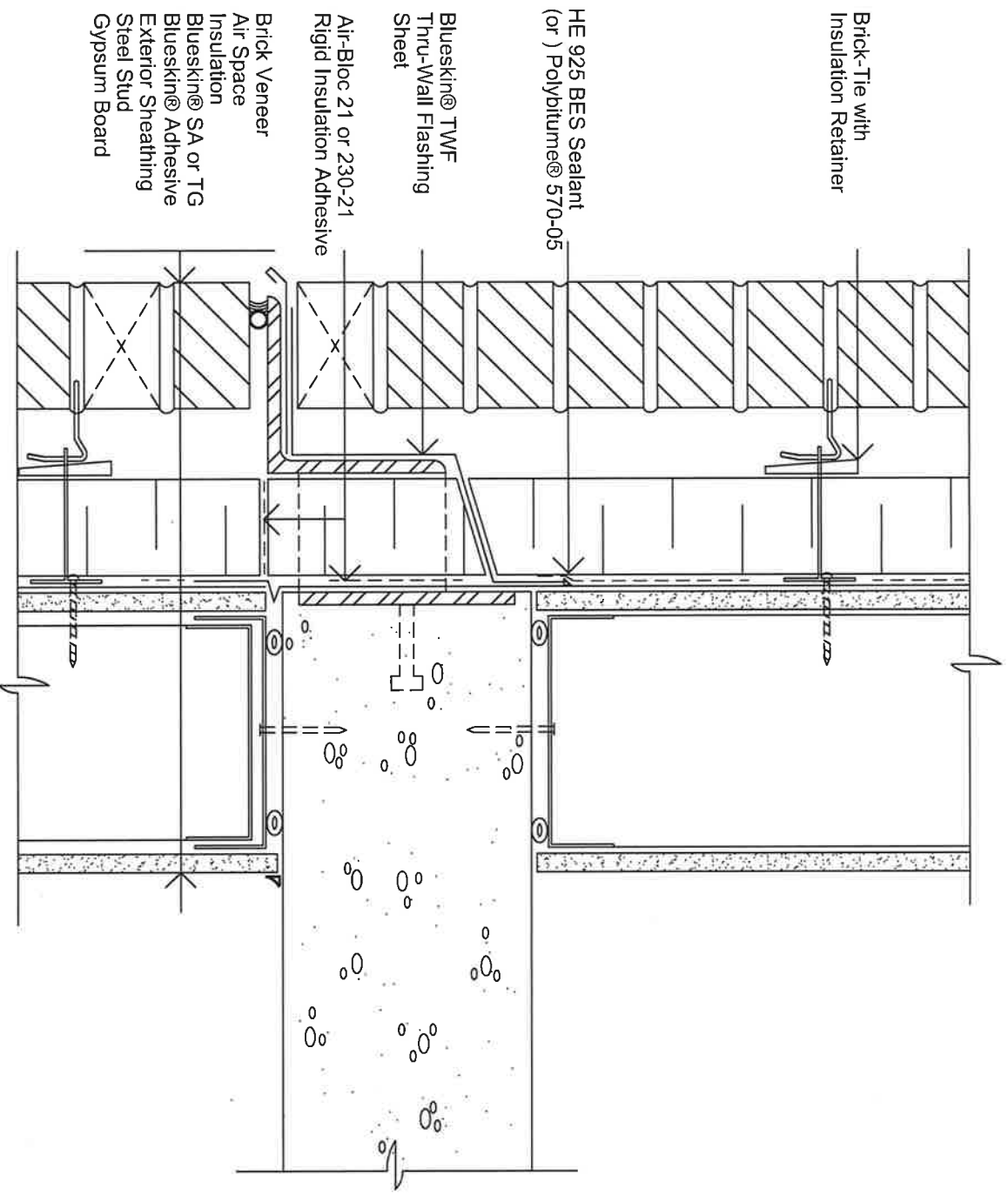
Issued: 08-14-97

Revision: 07

AB-16B96



15 Walsend Drive, Toronto ON M1E 3X6
Technical Services - 800-486-1278
Email: techservices@henry.com
www.ca.henry.com



- Notes:
1. Blueskin® is self-gasketing when self-lapping fastening systems are used.
 2. When Blueskin® membranes are used for the air/vapour barrier, the brick tie system can be installed after the Blueskin® is installed. This helps assure continuity and significantly reduces installation time.
 3. An alternate detail for the thru-wall flashing includes extending the membrane across the top of the floor slab prior to installing the lower track. Turn membrane up face of track prior to fastening interior gypsum board.
 4. Seal upper edge of Blueskin® TWF with HE925 BES Sealant or Polybitume® 570-05.

Blueskin® SA or Blueskin® TG

SHELF ANGLE DETAIL

BRICK VENEER / STEEL STUD WALL

Scale: N.T.S.

Plot: 1:5

Issued: 08-14-97

Revision: 07



15 WallSEND Drive, Toronto ON M1E 3X6
 Technical Services - 800-486-1278
 Email: techservices@henry.com
 www.ca.henry.com

AB-7B96

Brick-Tie with
Insulation Retainer

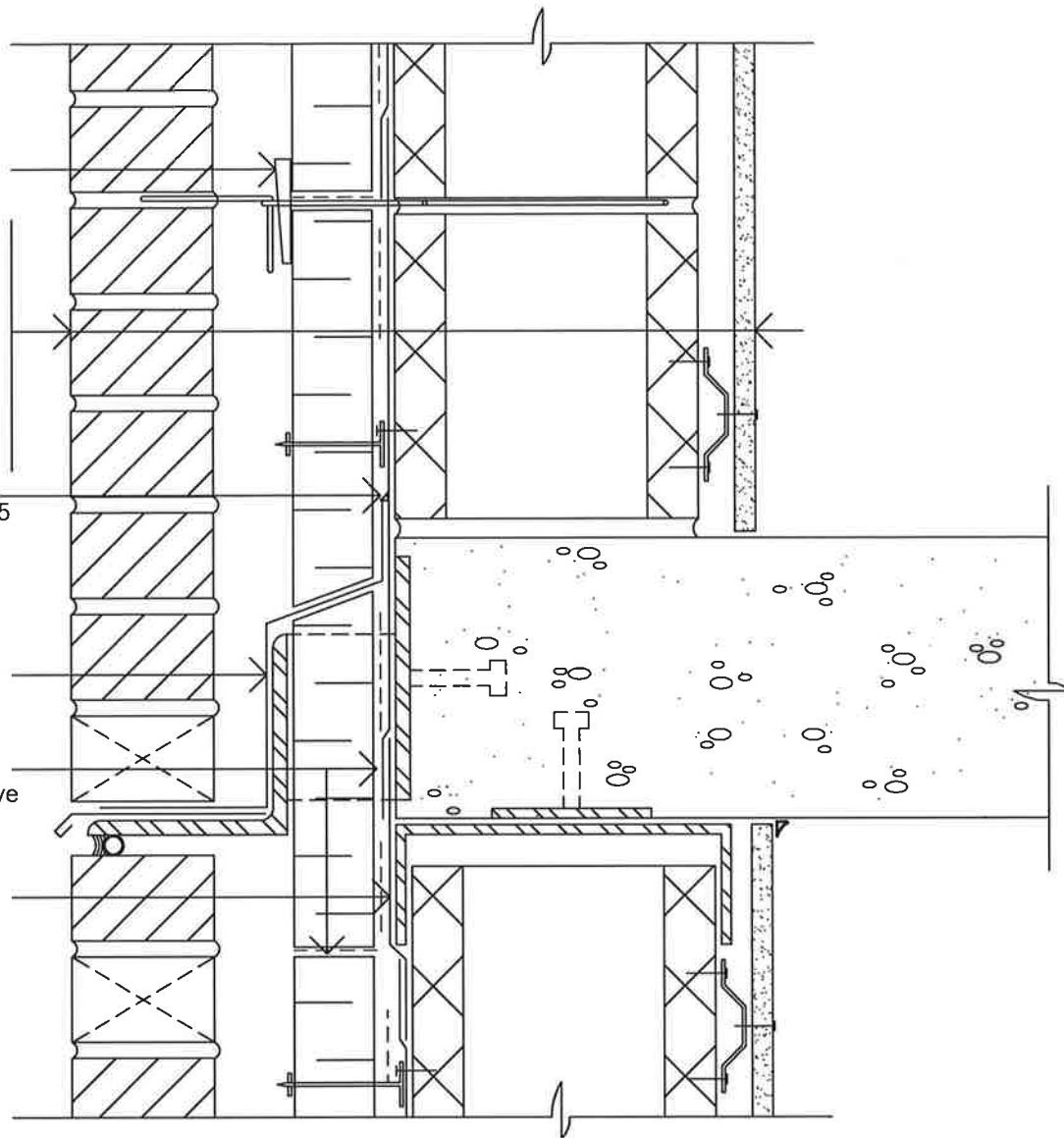
Brick Veneer
Air Space
Insulation
Blueskin® SA or TG
Blueskin® Adhesive
Concrete Masonry Unit
Furring
Gypsum Board

HE 925 BES Sealant
(or) Polybitume® 570-05

Blueskin® TWF
Thru-Wall Flashing
Sheet

Air-Bloc 21 or 230-21
Rigid Insulation Adhesive

Blueskin® SA or TG



Notes:

1. When Blueskin® membranes are used for the air/vapour barrier; the brick tie system can be installed after the Blueskin® is installed. This helps assure continuity and significantly reduces installation time.
2. It is recommended that the insulation be in tight contact with the air/vapour barrier.
3. When the brick-tie system is installed prior to the Blueskin®, the membrane is cut, fitted and sealed with Air-Bloc 21 around each tie projection. A 50mm(2") lap is needed over the ties.
4. Seal upper edge of Blueskin® TWF with HE925 BES Sealant or Polybitume® 570-05.

Blueskin® SA or Blueskin® TG

**SHELF ANGLE
DETAIL**

BRICK VENEER / CONC. BLK. WALL

Scale: N.T.S.

Plot: 1:5

Issued: 08-14-97

Revision: 07

AB-8B96



15 Walisend Drive, Toronto ON M1E 3X6
Technical Services - 800-486-1278
Email: techservices@henry.com
www.ca.henry.com